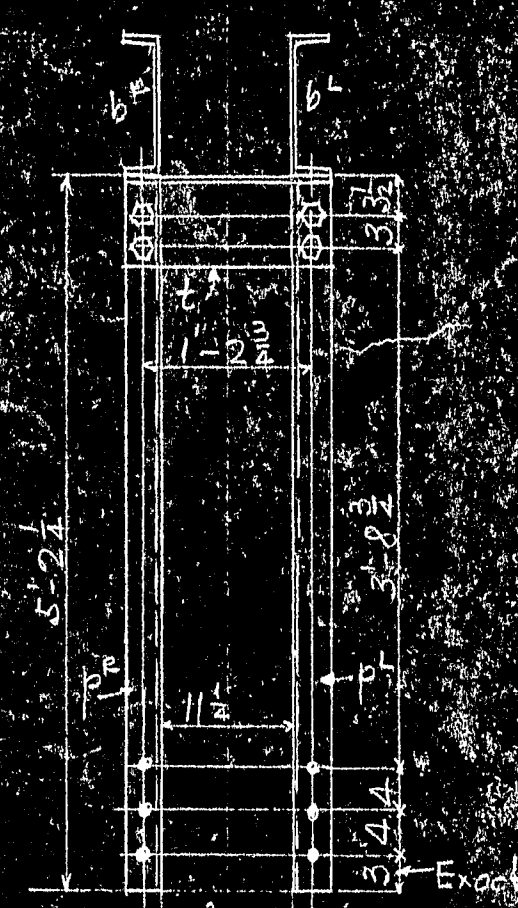
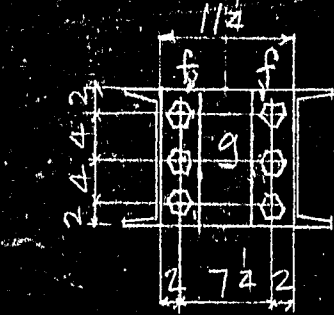


- Material for SS1
1. 1/2" x 3/4" x 11-10 1/2" Tp. Bore
  2. 1/2" x 3/4" x 11-10 1/2" (-2) Bore
  3. 1/2" x 3/4" x 11-10 1/2" (-2) Bore
  4. 1/2" x 3/4" x 11-10 1/2" (-2) Bore
  5. 1/2" x 3/4" x 11-10 1/2" (-2) Bore
  6. 1/2" x 3/4" x 11-10 1/2" (-2) Bore
  7. 1/2" x 3/4" x 11-10 1/2" (-2) Bore
  8. 1/2" x 3/4" x 11-10 1/2" (-2) Bore
  9. 1/2" x 3/4" x 11-10 1/2" (-2) Bore
  10. 1/2" x 3/4" x 11-10 1/2" (-2) Bore
  11. 1/2" x 3/4" x 11-10 1/2" (-2) Bore
  12. 1/2" x 3/4" x 11-10 1/2" (-2) Bore
  13. 1/2" x 3/4" x 11-10 1/2" (-2) Bore
  14. 1/2" x 3/4" x 11-10 1/2" (-2) Bore
  15. 1/2" x 3/4" x 11-10 1/2" (-2) Bore
  16. 1/2" x 3/4" x 11-10 1/2" (-2) Bore
  17. 1/2" x 3/4" x 11-10 1/2" (-2) Bore
  18. 1/2" x 3/4" x 11-10 1/2" (-2) Bore
  19. 1/2" x 3/4" x 11-10 1/2" (-2) Bore
  20. 1/2" x 3/4" x 11-10 1/2" (-2) Bore



Section B-B

- Material for SS2
1. 1/2" x 3/4" x 11-10 1/2" Tp. Bore
  2. 1/2" x 3/4" x 11-10 1/2" (-2) Bore



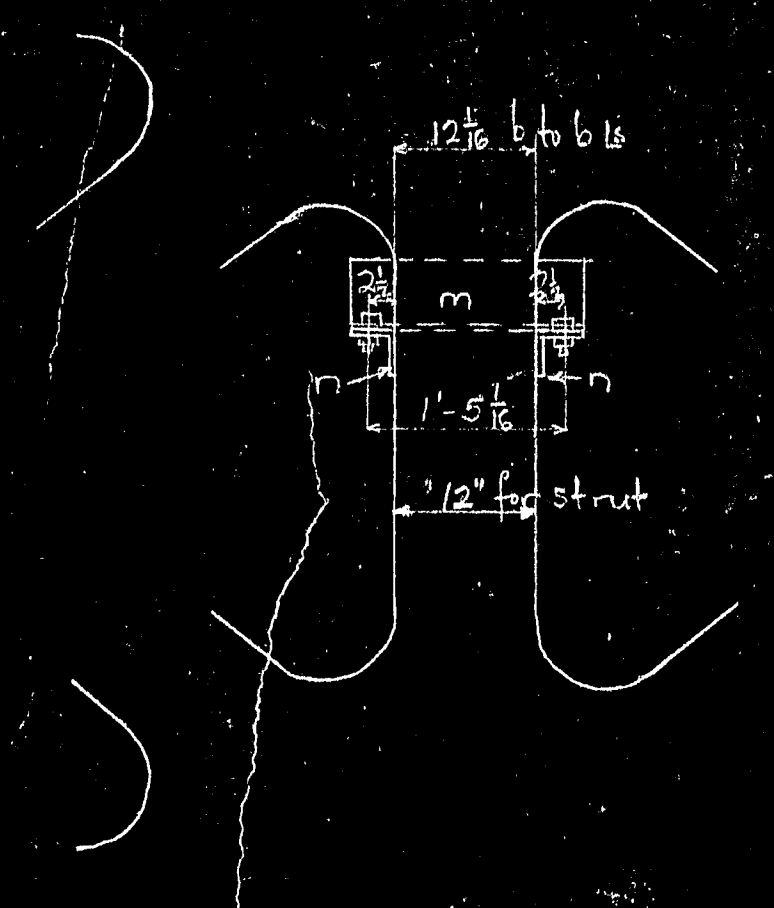
Section E-E

- Material for SS3
1. 1/2" x 3/4" x 11-10 1/2" Tp. Bore
  2. 1/2" x 3/4" x 11-10 1/2" (-2) Bore
  3. 1/2" x 3/4" x 11-10 1/2" (-2) Bore
  4. 1/2" x 3/4" x 11-10 1/2" (-2) Bore
  5. 1/2" x 3/4" x 11-10 1/2" (-2) Bore
  6. 1/2" x 3/4" x 11-10 1/2" (-2) Bore
  7. 1/2" x 3/4" x 11-10 1/2" (-2) Bore
  8. 1/2" x 3/4" x 11-10 1/2" (-2) Bore
  9. 1/2" x 3/4" x 11-10 1/2" (-2) Bore
  10. 1/2" x 3/4" x 11-10 1/2" (-2) Bore
  11. 1/2" x 3/4" x 11-10 1/2" (-2) Bore
  12. 1/2" x 3/4" x 11-10 1/2" (-2) Bore
  13. 1/2" x 3/4" x 11-10 1/2" (-2) Bore
  14. 1/2" x 3/4" x 11-10 1/2" (-2) Bore
  15. 1/2" x 3/4" x 11-10 1/2" (-2) Bore
  16. 1/2" x 3/4" x 11-10 1/2" (-2) Bore
  17. 1/2" x 3/4" x 11-10 1/2" (-2) Bore
  18. 1/2" x 3/4" x 11-10 1/2" (-2) Bore
  19. 1/2" x 3/4" x 11-10 1/2" (-2) Bore
  20. 1/2" x 3/4" x 11-10 1/2" (-2) Bore

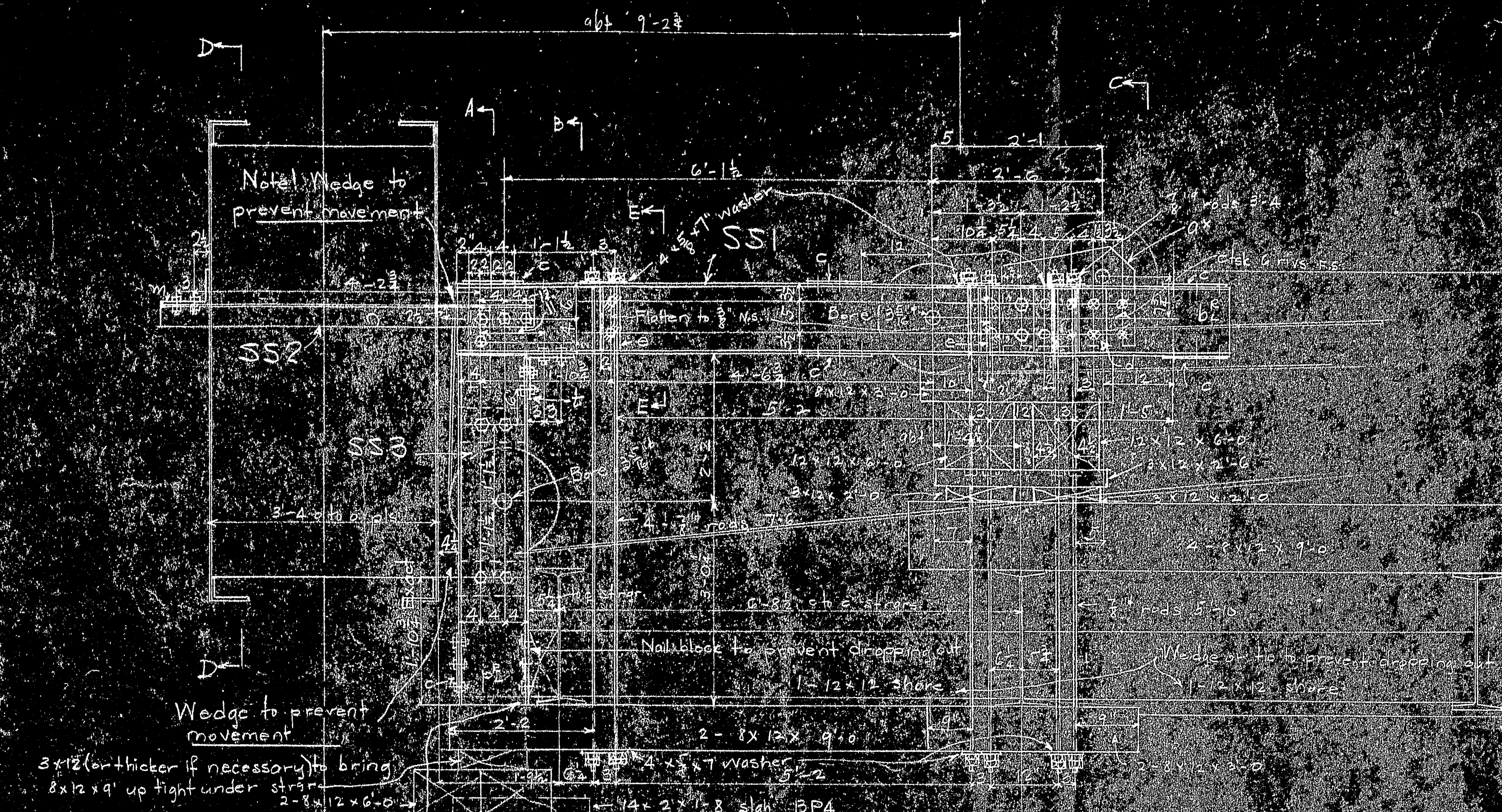
Open holes 15" unless noted  
Bolts & rivets 7/8"  
Edge distances not given are 1/2"

- Wanted
- 1-SS1
  - 1-SS2
  - 1-SS3
  - 4- 1/2" rods 7-6 (Double nuts)
  - 8- 1/2" rods 3-4 (do)
  - 8- 1/2" rods 5-10 (do)
  - 20- 4" x 7" washers (13" c/c holes)
  - 12 x 12 2 1/2" x 2 1/2"
  - 8 x 12 2 1/2" x 2 1/2"
  - 6 x 12 2 1/2" x 2 1/2"
  - 3 x 12 2 1/2" x 2 1/2"

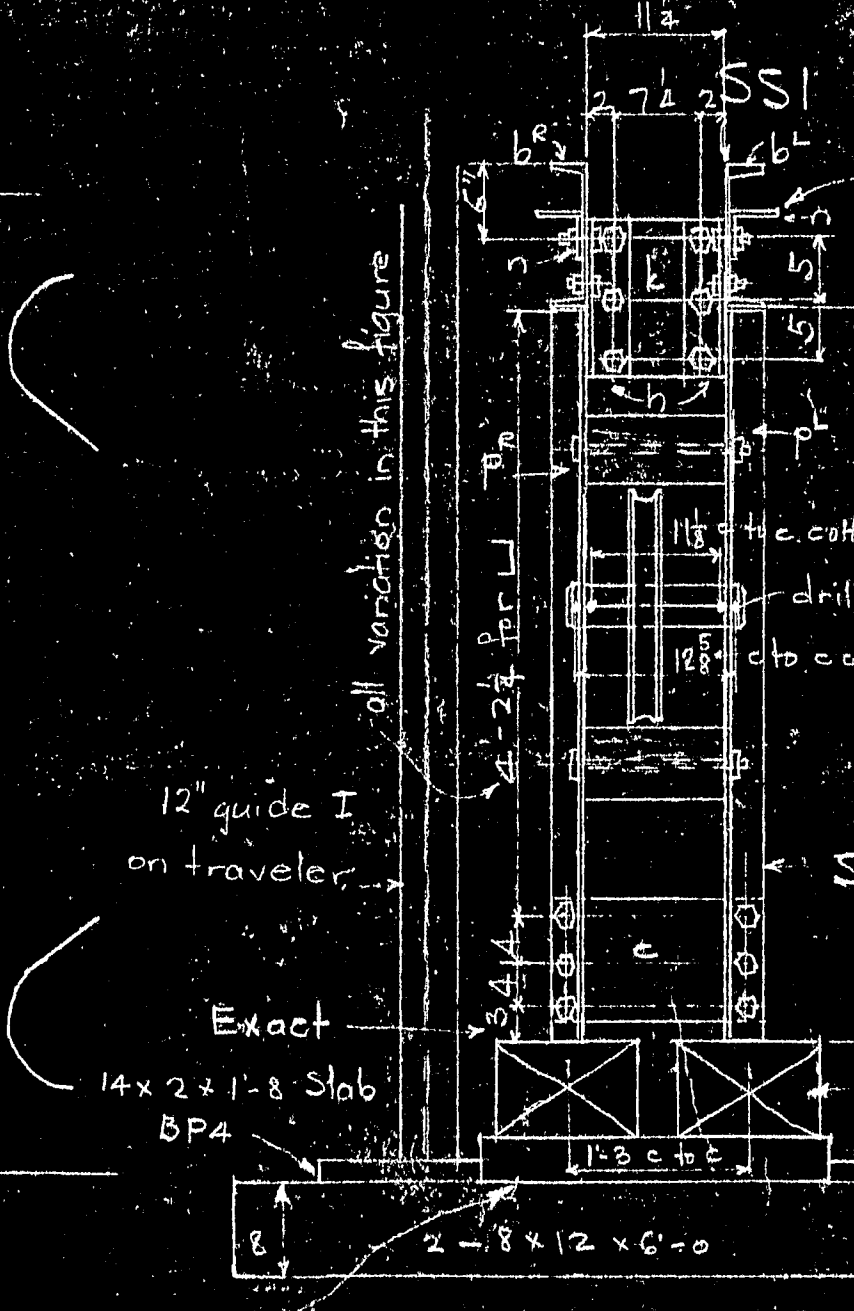
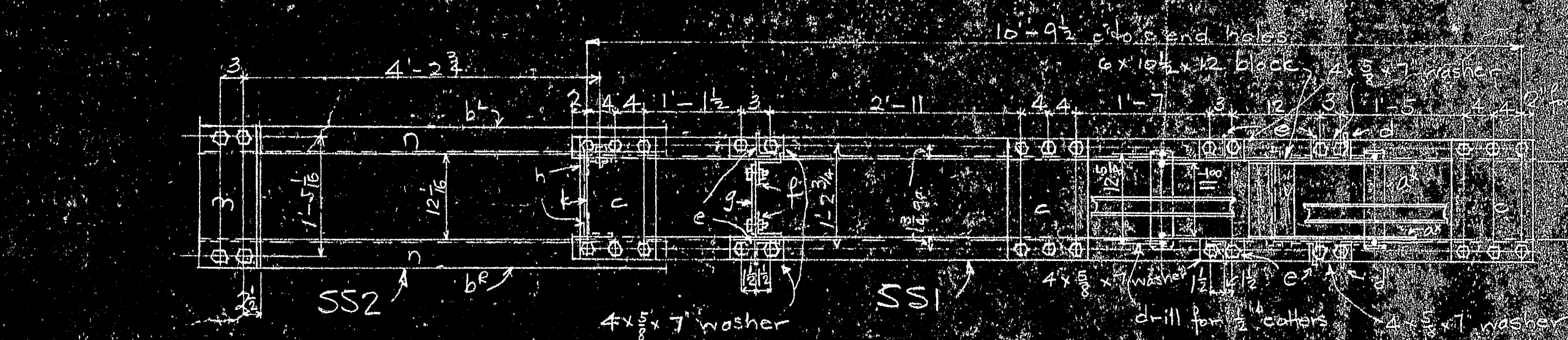
2- Slob. BP4



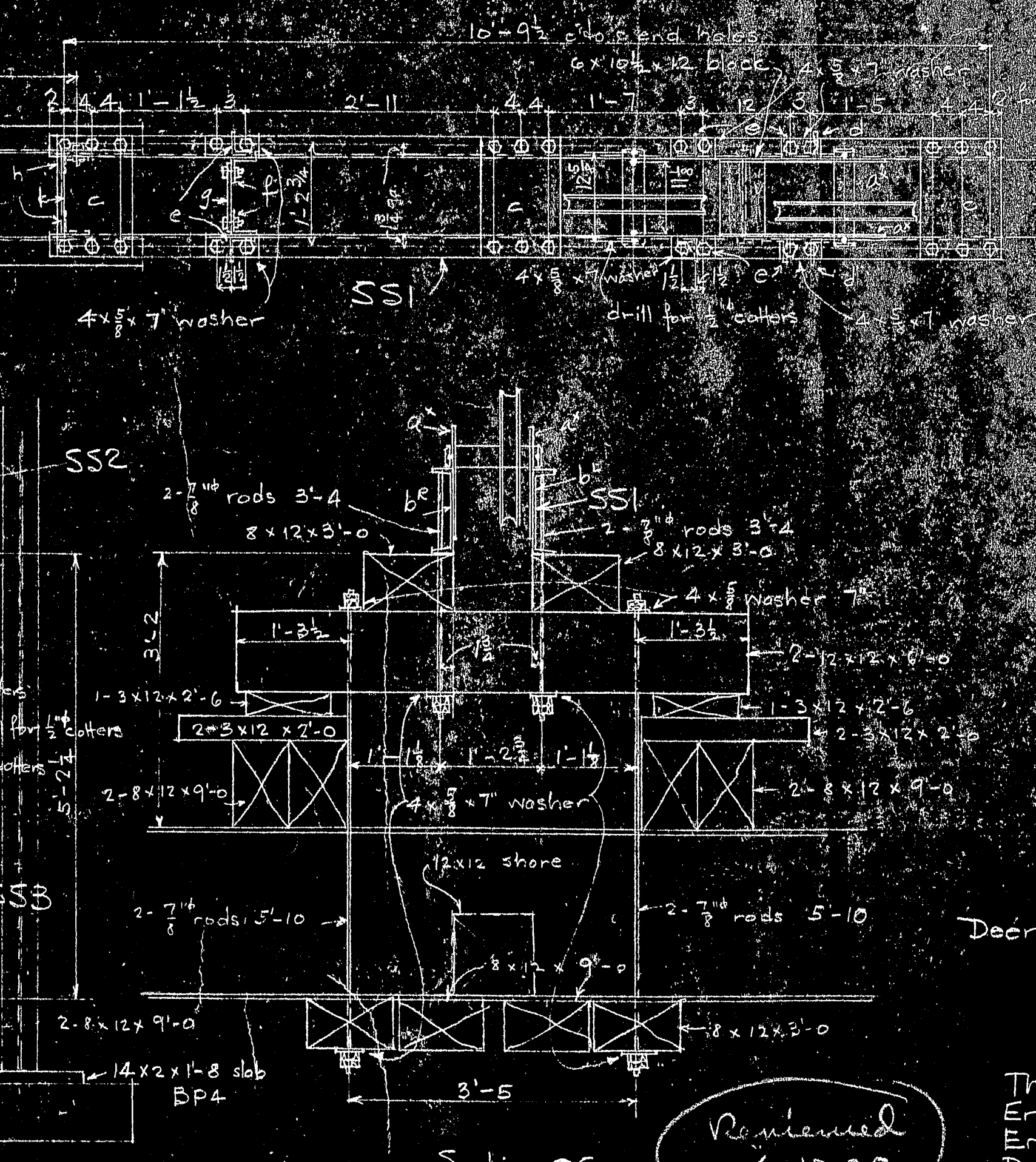
Section D-D



Note: Wedge to prevent movement  
Wedge to prevent movement  
3x12 (or thicker if necessary to bring 8x12 up tight under stringer) 2'-6" long



Section A-A  
3x12 (or thicker as necessary to bring 8x12 up tight under stringer) 2'-6" long



Section CC  
3x12 (or thicker as necessary to bring 8x12 up tight under stringer) 2'-6" long

Sheave Stand

Door Isle - Sedgwick

The Phoenix Bridge Co.  
Erection Dept.  
Engineer R.S. Foulds  
Draftsman J.P. Wagoner  
Scale 3/4" = 1'-0"  
Date June 8, 1938

Dwg. T4a-T0.540-C.O.457

